

Coonamessett Farm Beach plum culture experiment results

FIGURE 1. GROWTH OF PLANTS BY TREATMENT. GROWTH MEASURED AS TRUNK DIAMETER. DIFFERENCES WITHIN FERTILIZER REGEIME ARE NOT SIGNIFICANTLY DIFFERENT.

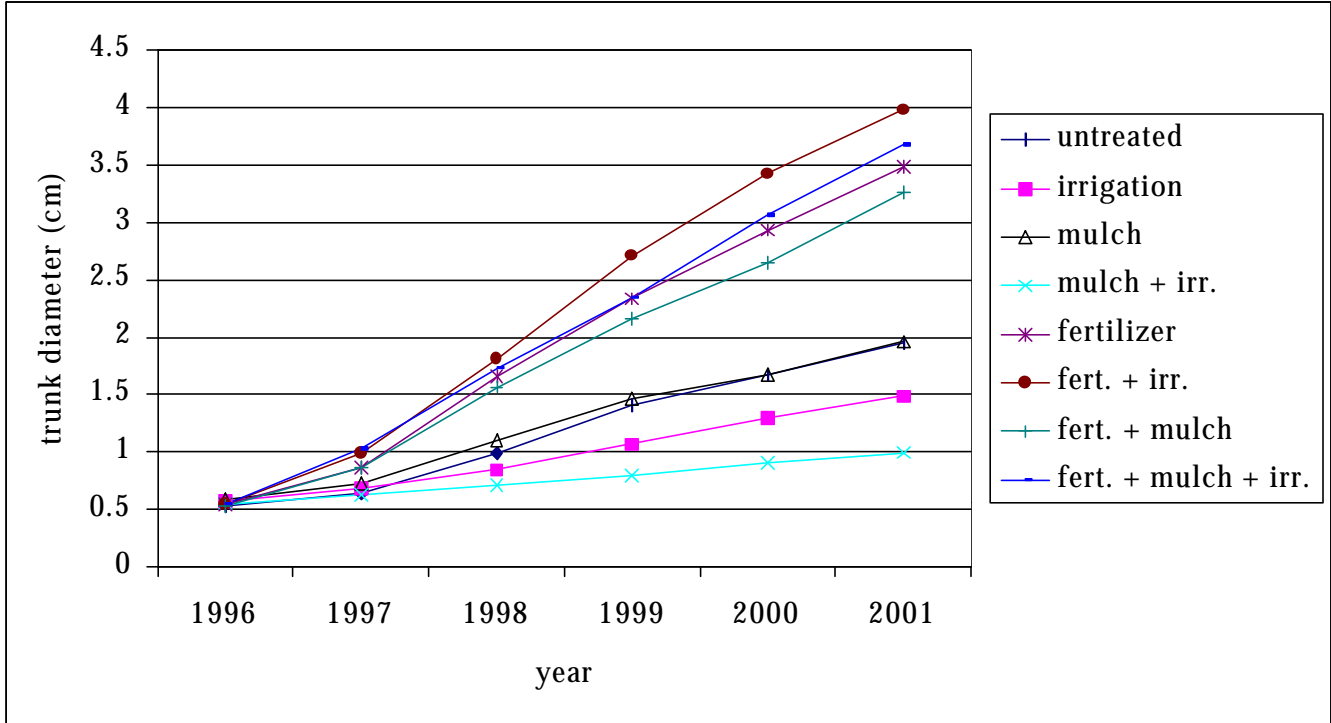


FIGURE 2. YIELD SIGNIFANTLY GREATER IN FERTILIZED TREATMENTS OVER UNFERTILIZED TREATMENTS 1999-2001. MULCH AND IRRIGATION DID NOT SIGNIFICANTLY CHANGE YIELD.

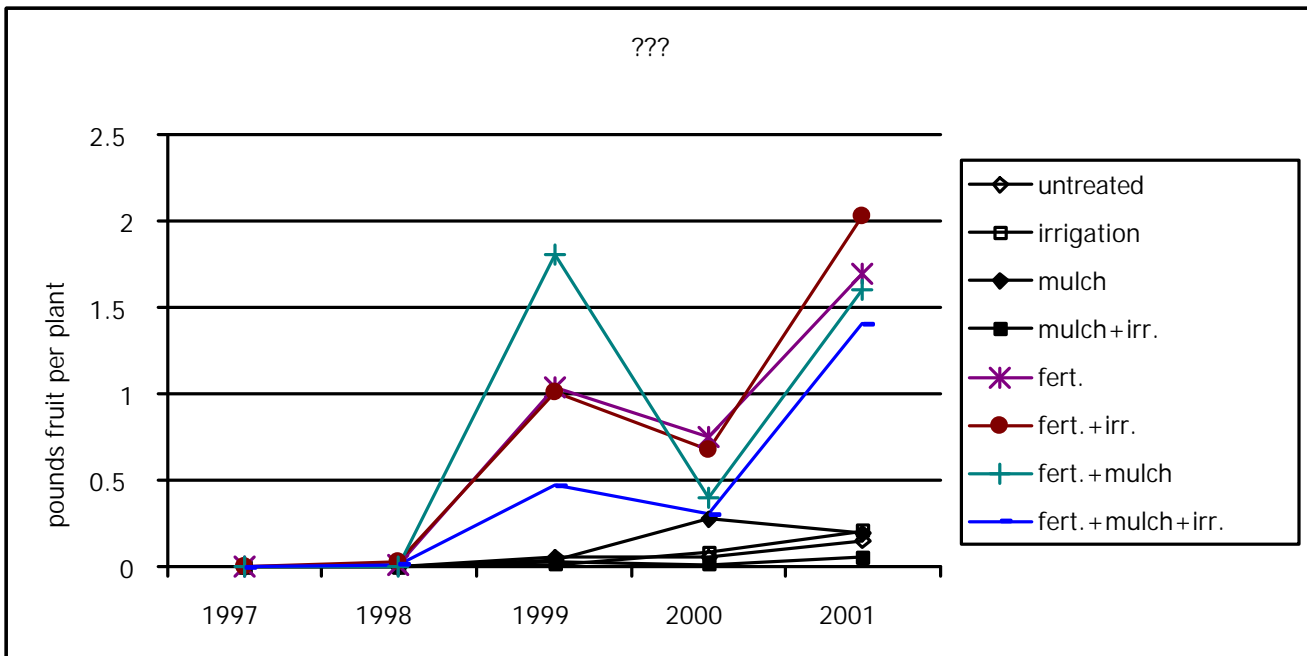


FIGURE 3. AVERAGE YIELD OF THE 10 HIGHEST YIELDING PLANTS. ALL PLANTS IN THE EXPERIMENT ARE FROM SEED. SELECTIONS COULD BE MADE TO IMPROVE YIELD.

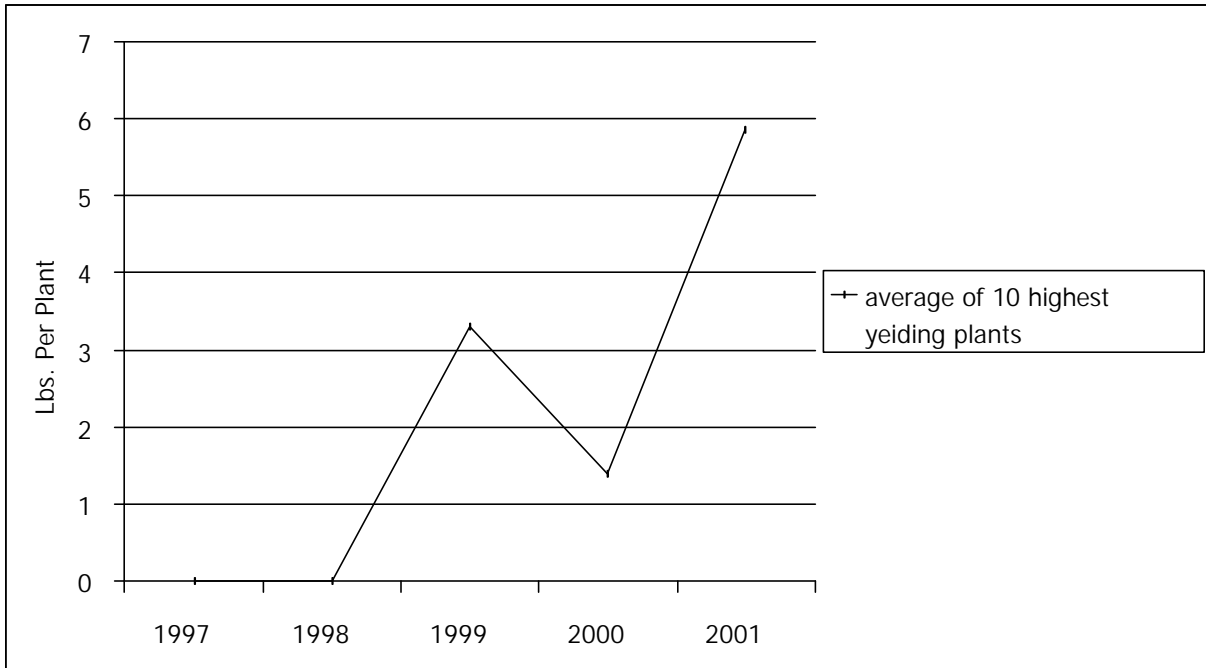
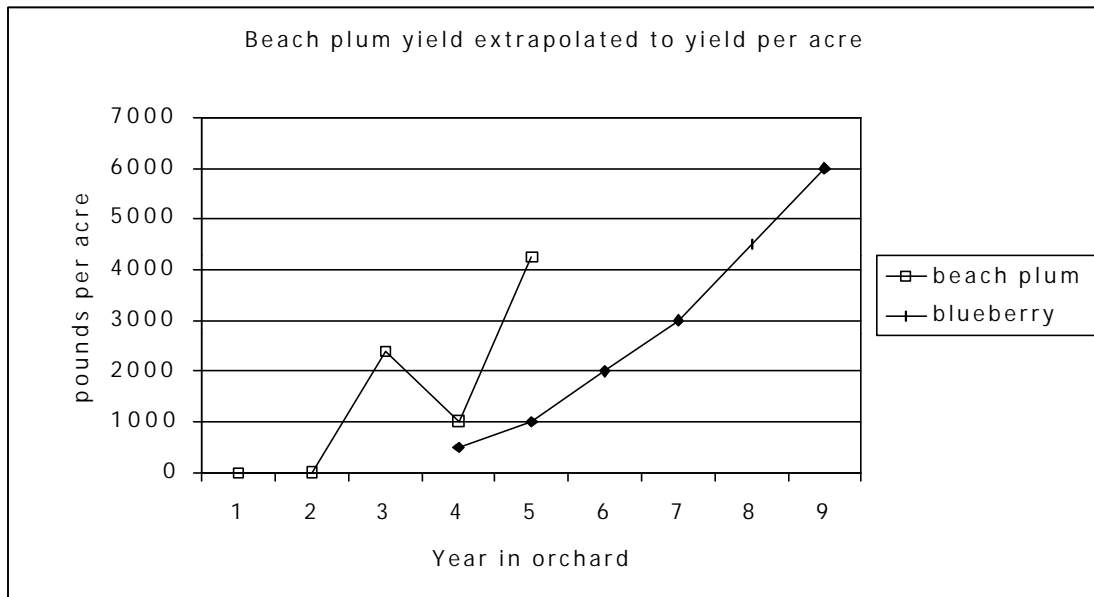


FIGURE 4. YIELD OF THE 10 HIGHEST YIELDING PLANTS EXTRAPOLATED TO POUNDS PER ACRE AND COMPARED TO TYPICAL BLUEBERRY YIELDS.



Blueberry data from:
 Pritts and Hancock, High bush blueberry production guide. NRAES #55.